

THE COMPLETE SOFTWARE SUITE TOOL FOR AUTOMATISMS TEST, TRAINING & SIMULATION



Key Features:

- *With EasyPLC you will be able to write programs as if you have been working with a PLC, using the more common languages like Ladder, Grafcet, Logic Blocks or Script.*
- *Use the HMI System to create the Human Machine Interface, to communicate the computer with users.*
- *If you want to simulate your program and you do not have a physical system, use the Machines Simulator software, where you can use a real 3D world with physics to test your programs with the machines that you can create or with the predefined ones.*



Product Feature

With EasyPLC you can use a personal computer to make automatism control, test, training and simulation.

The main characteristic of EasyPLC is that it emulates the operation of a PLC, using the programming languages most used in the industrial world: Ladder, Grafcet, Logic Blocks Functions and Script.

EasyPLC is the perfect tool to learn how to use the automatic control systems used in the industry, only with your Personal Computer, the EasyPLC software and an input/output interface (optional).

Software Modules

EasyPLC Software Suite is composed by EasyPLC Editor, Virtual PLC CPU, HMI System and Machines Simulator.

- EasyPLC Editor is used to create, edit and debug the logic programs.
- Virtual PLC CPU emulates the PLC operation, executing the logic programs.
- HMI System is the program that offers the program interface between the users and the PLC. With this tool you can create Screens easily to make the information exchange.
- Machines Simulator offers a virtual 3D world with real time graphics and physics where the PLC programs can be tested.

Applications

You can use EasyPLC to make automatism control, training, simulation, initiation in the world of the PLC's, robotics, etc...





Machines Simulator working, showing the HMI System and EasyPLC Editor in debug mode

Minimum Hardware Requirements:

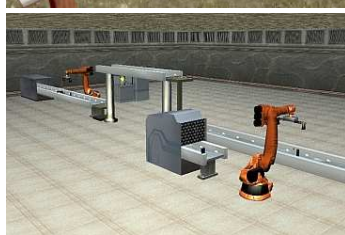
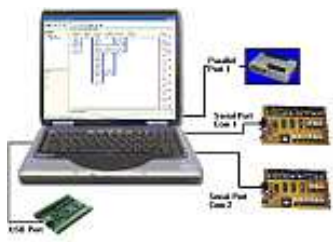
Processor: Pentium IV or AMD K8
 RAM: 128 Mb.
 Disk Space: 550 Mb of free disk space.
 Graphics card: DirectX 9.0 compatible with a minimum of 64MB of memory and vertex/pixel shader 1.1
 A Sound card installed is necessary.

Operative System Compatibility:

Windows XP (SP2 & SP3), Windows Vista and Windows 7. All 32 & 64 bits versions.

Compatible for all Systems

You can use Machines Simulator to test the EasyPLC logic programs or the PLC programs made with any PLC system, to do it, you must use an external EasyPLC hardware I/O Interface to communicate with the PLC and use the EasyPLC simulated I/O to interface the PLC signals with Machine Simulator



EasyPLC Connections

EasyPLC can be compatible with any I/O analogical/digital device designed for Windows XP / Vista / Windows 7. Using the EasyPLC SDK utilities is possible to develop the drivers to manage them with EasyPLC.

EasyPLC can be compatible with any commercial PLC using the available I/O devices at www.nirtec.com or any third party I/O devices.

Machines Simulator Characteristics

Machines Simulator offers a virtual 3D world with real time graphics and physics where the PLC programs can be tested.

You can create your own machines or use some of the different predefined machines installations.

Select the necessary components from the Machine Simulator editor library to build your machine, configuring the Input/Output assignments and the specific elements characteristics in a very easy way. In the editor library you can find different kinds of sensors and actuators like photocells, inductive switches, electric motors, transporters trays, elevators, and more.

If the components you need are not available in the library, you can use the components Editor to create your own mechanisms, devices ...

Machines Simulator benefits

For students:

A great problem for automatism students is the lack of resources to practice the acquired knowledge. Imagine a virtual 3D world where you can practice with all kinds of machinery.

For professionals:

Do not take a risk of damaging the machinery through a programming error. Make the programs prototypes before the machine is concluded. Show to yours customers how the system will work before being built.

Nirtec

www.nirtec.com
 Valencia / Spain

easyplc@nirtec.com
info@nirtec.com

Idea & Design & Programmed by Rafael Izquierdo.
 Copyright © Rafael Izquierdo 2011
 All rights reserved

