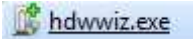
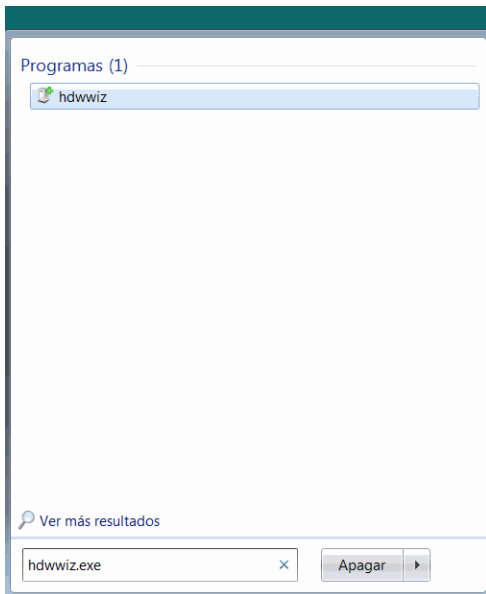


Driver for Nirtec 15I160 USB Card (Windows 7 64-bit) Installation

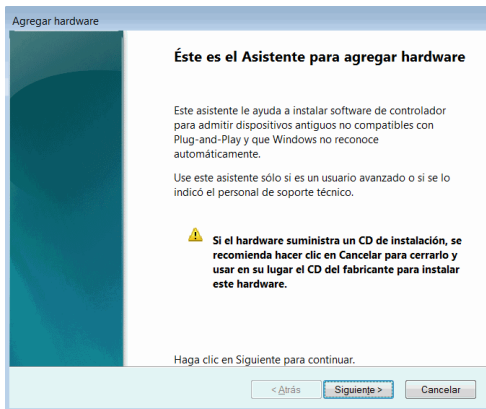
Go to "start" and run the program "hdwwiz.exe"



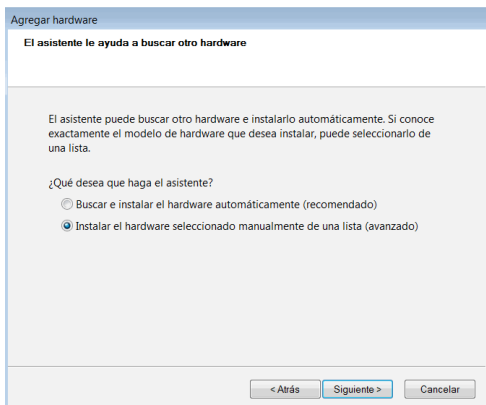
hdwwiz.exe



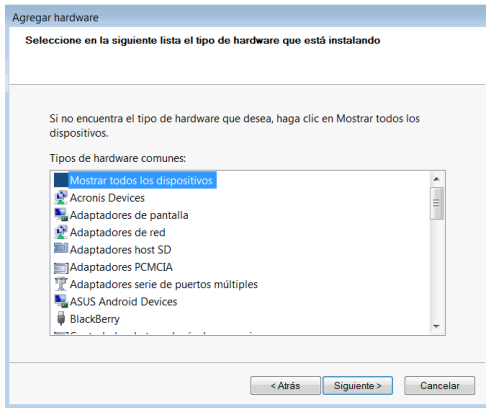
The following screen will appear (probably not in Spanish), but the mouse clicks will be the same anyway.



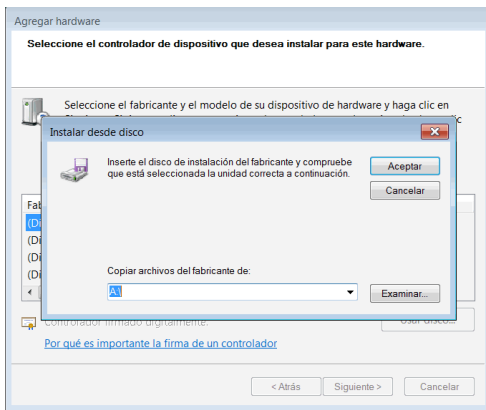
Click "Next"



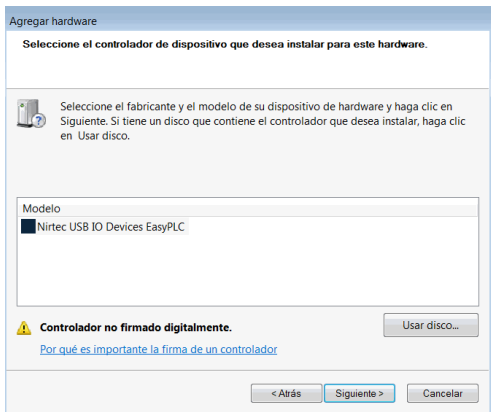
Choose the option "select manually...". This is not the default option.
Click next.



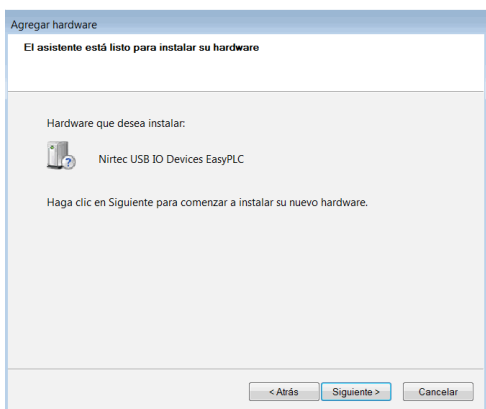
Select "all devices". This is the default.
Click next.



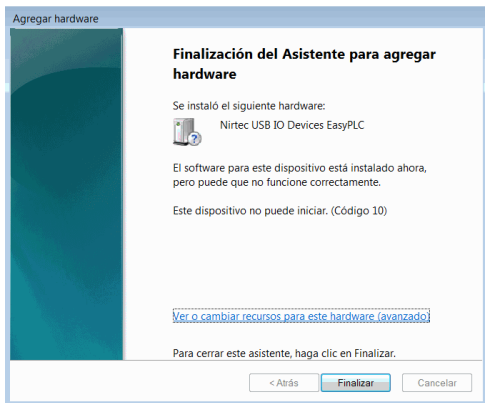
Select "install from disk" and browse to the location where you have copied the drivers.



Click next.



Click next.



Even when you get a warning, it does not mean that the device is not working correctly.

